



DOG GUIDELINES

JULY 2022



Karura Forest Reserve is the only protected area in Kenya that allows visitors to bring their dogs under a system of dog-registration and on-leash control. [See the Dog Guidelines.](#)

There are 3 areas in which dogs are allowed **off-leash** — see map below.

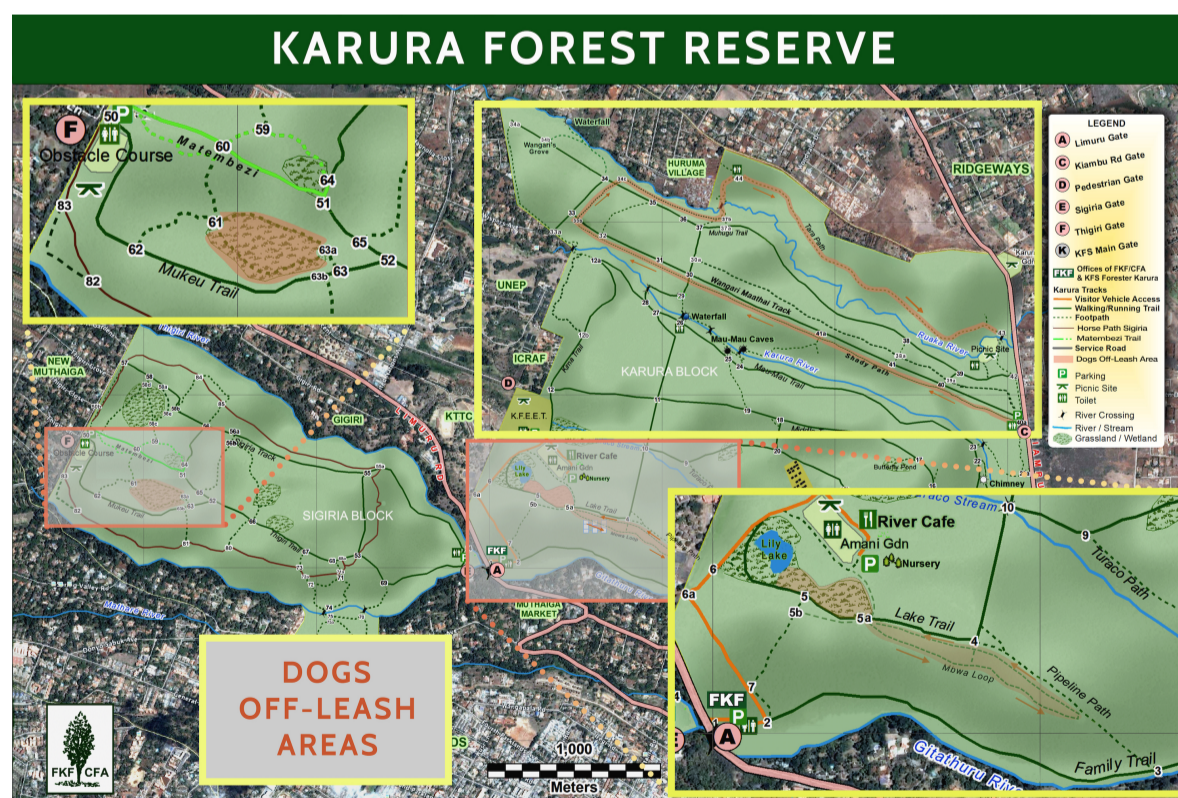
A '**Dogs Off-Leash**' area is a clearly sign-posted zone in which you can let your pet off its leash (lead) to run back and forth along the trail or in a designated clearing.

The dog must be under **VOICE COMMAND CONTROL** at all times, must **STAY ON TRACK** with you, and must **NOT RUN WILD** into the forest to chase wildlife.

If you cannot exercise **VOICE COMMAND CONTROL** over your dog **OFF-LEASH**, then you must keep it **ON-LEASH** in ALL areas of the forest.

**IF YOU CANNOT CONTROL YOUR DOG,
YOU CANNOT BRING IT INTO THE FOREST.**

When you **MEET OTHER DOGS**, use your judgment whether or not to put your dog back **ON-LEASH** until you have moved past the other dogs.



VISITORS FOUND WITH DOGS OFF-LEASH IN ON-LEASH AREAS OR WITH DOGS OUT OF CONTROL IN ANY AREA SHALL BE ESCORTED OUT OF THE FOREST AND BANNED FOR 6 MONTHS.

Ignorance of the rule is no excuse.

HELP US MAINTAIN THE PRIVILEGE OF WALKING DOGS IN KARURA

IF YOU ENCOUNTER PROBLEM DOGS OR DOG OWNERS, REPORT THE SITUATION IMMEDIATELY TO FKF OPERATIONS MANAGER — 0721-112 607.